



**transport**

---

Department:

Transport

**PROVINCE OF KWAZULU-NATAL**

**BRIEFING NOTES FOR THE REGRAVELLING OF D1224 FROM (KM 0+000 – KM 5+362), L1037 FROM (KM 0+00 TO 1+068) AND L737 FROM (KM 0+00 TO KM 1+501)**



**transport**

Department:  
Transport  
PROVINCE OF KWAZULU-NATAL

**TENDER NUMBER: CONTRACT NO. ZNB00568/00000/00/PMC/INF/21T: REGRAVELLING OF D1224 (KM 0+00 – KM 5+362), L737 (KM 0+00 TO 1+501 KM) AND L1037 (KM 0+00 TO 1+068) (7.931 KM) IN IMPENDLE UNDER THE VULINDLELA AREA OFFICE**

**Tender documents are available at no cost in electronic format downloadable from KZN Department of Transport website [http://www.kzntransport.gov.za/tenders\\_bids/index.htm](http://www.kzntransport.gov.za/tenders_bids/index.htm)**



**transport**

Department:

Transport

PROVINCE OF KWAZULU-NATAL

# WELCOME & INTRODUCTION



**ENQUIRES**

Queries relating to issues arising from these documents may be addressed to the following:

ALL ENQUIRIES				
	<b>Project</b>	<b>Contact Person</b>	<b>Email Address</b>	<b>Telephone</b>
Technical	D1224,L 737&L10 37	<b>Mr. N.A.Bhengu</b>	<a href="mailto:Njabulo.bhengu@kzntransport.gov.za">Njabulo.bhengu@kzntransport.gov.za</a>	<b>+27 33 940 4800</b>
SCM		<b>Thembelihle Dlomo</b>	<a href="mailto:Thembelihle.Dlomo@kzntransport.gov.za">Thembelihle.Dlomo@kzntransport.gov.za</a>	<b>+27 33 392 6600</b>



**transport**

Department:  
Transport  
PROVINCE OF KWAZULU-NATAL

## IMPORTANT DATES

TENDER CLOSING DATE	<b>11H00 ON TUASDAY, 6 July 2021</b>
---------------------	--------------------------------------



# Overview

## TENDER SECTION

PART T1: TENDERING PROCEDURES

PART T2: RETURNABLE DOCUMENTS

## CONTRACT SECTION

PART C1: AGREEMENTS AND CONTRACT DATA

PART C2: PRICING DATA

PART C3: SCOPE OF WORKS

PART C4: SITE INFORMATION



**transport**

Department:

Transport

PROVINCE OF KWAZULU-NATAL

# **PART T1: TENDERING PROCEDURES**



## T1.1: TENDER NOTICE AND INVITAION TO TENDER

CONTRACT NO. **ZNB00568/00000/00/PMC/INF/21/T**: REGRAVELLING OF D1224 (KM 0+00 TO KM 5+362), L1037 (KM 0+00 TO KM 1+068) & L737 (KM0+00 TO KM 1+501) IN THE IMPENDLE LOCAL MUNICIPALITY (KZ224), COST CENTRE PIETERMARITZBURG

The Province of KwaZulu-Natal, Department of Transport, invites tenders from contractors, experienced in roadworks, for the **REGRAVELLING OF D1224 (KM 0+00 TO KM 5+362), L1037 (KM 0+00 TO KM 1+068) & L737 (KM 0+00 TO KM 1+501) IN THE IMPENDLE LOCAL MUNICIPALITY (KZ224), COST CENTRE PIETERMARITZBURG**. This project is in the province of KwaZulu-Natal in the district municipality of uMgungundlovu and local municipality of Impendle. The duration of the project is **5** months.

Only tenderers that satisfy the eligibility criteria stipulated in clause C.2.1 of the Tender Data are eligible to have their tenders considered.

It is estimated that tenderers must have a CIDB contractor grading **designation 4CE or higher**.

Document will be made available on [www.etenders.treasury.gov.za](http://www.etenders.treasury.gov.za). Documents will be available from **08 June 2021**.

There will be NO Tender Briefing for this tender but briefing notes will be available for downloading with the tender document to aid tenderers in completing the documents

Technical Queries relating to this Tender may be addressed to:

Mr N.A. Bhengu on telephone no. 033 940 4800 or e-mail address: [Njabulo.bhengu@kzntransport.gov.za](mailto:Njabulo.bhengu@kzntransport.gov.za)

The closing time for receipt of Tender is **11:00 on Tuesday 6 July 2021**. Telegraphic, telephonic, telex, facsimile, electronic, e-mail and late Tenders will not be accepted.

Electronic scanned copies of the submitted tenders must be emailed to [tenders.pmbregion@kzntransport.gov.za](mailto:tenders.pmbregion@kzntransport.gov.za) on the same date of closing of the tender.

Requirements for sealing, addressing, delivery, opening and assessment of tenders are stated in the Tenders Data

Refer to  
pg. T5





**transport**

Department:

Transport

PROVINCE OF KWAZULU-NATAL

# TENDERING PROCEDURES

## T1.2: TENDER DATA



**transport**

Department:

Transport

PROVINCE OF KWAZULU-NATAL

## CONDITIONS OF TENDER

The conditions of tender are the standard conditions of tender contained in Annex C of the Construction Industry Development Board Standard for Uniformity in Engineering and Construction Works Contracts, published in Government Gazette No. 42622 dated 8 August 2019.



**TENDER DATA**

The standard conditions of tender make several references to the tender data for details that apply specifically to this tender. The tender data shall have precedence in the interpretation of any ambiguity or inconsistency between the tender data and the standard conditions of tender.

<b>CLAUSE NUMBER</b>	<b>TENDER DATA</b>
	<p>The Employer is The KZN Department of Transport:</p> <p><b>The Employer's address for communication relating to this project is:</b></p> <p>Pietermaritzburg Regional Office 1 Woodlands road Pietermaritzburg 3200</p>



**TENDER DATA**

<b>CLAUSE NUMBER</b>	<b>TENDER DATA</b>
C2.1	<p>Only those tenderers who satisfy the following criteria are eligible to submit tenders.</p> <ul style="list-style-type: none"><li>a) Contractor grading designation equal to or higher than a 4 for a CE</li><li>b) Registered on the Central Supplier Database</li></ul>



TENDER DATA

C.2.13	Tender offers shall be submitted as an original hard copy on No 1 Woodlands road, Pietermaritzburg, 3201 and copies of the submitted tender must be emailed to <a href="mailto:pmbtenders@kzntransport.gov.za">pmbtenders@kzntransport.gov.za</a>
C.2.15	The closing time for submission of Tender Offers is: <b>11:00 on Tuesday 6 July 2021</b>



## TENDER DATA

CLAUSE NUMBER	TENDER DATA
C2.16	The tender offer validity period is <b>12 weeks</b> from the closing date/ time for submission of tenders.



**TENDER DATA**

<b>CLAUSE NUMBER</b>	<b>TENDER DATA</b>
C3.4	<p><b>Tender Opening</b></p> <p>The time and location for opening of the tender submissions are:</p> <p>Time: <b>11H00</b> Date: <b>Tuesday, 6 July 2021</b></p> <p>Location / Venue: KZN Department of Transport, The Regional Office Foyer, No 1 Woodlands road, Pietermaritzburg.</p>



**TENDER DATA**

<b>CLAUSE NUMBER</b>	<b>TENDER DATA</b>
C.3.13	<p>(e) The legal requirements for acceptance of the tender offer are:</p> <p>(i) The Tenderer or any of its principals is not listed on the register of Tender Defaulters in terms of the Prevention and Combating of Corrupt Activities Act of 2004 as a person prohibited from doing business with the public sector.</p> <p>(ii) the Tenderer has not abused the Employer's Supply Chain Management System.</p> <p>(iii) The Tenderer has indicated and declared whether a spouse, child or parent of the Tenderer is in the service of the State.</p> <p>(iv) The Employer is satisfied that the Tenderer or any of his principals have not influenced the tender offer and acceptance</p>





# PART T2: RETURNABLE DOCUMENTS

- (a) Returnable Schedules in T2.2.
- (b) C1.1 Form of Offer and Acceptance, C1.1.1: Offer, on page C3.
- (c) Contract Specific Data Provided by the Contractor in C1.2.3.
- (d) Pricing Data in C2.2: Bill of Quantities.



## T2.2 : RETURNABLE SCHEDULES

### Notes to tenderer:

1. **Returnable schedules have been based on the CIDB Standard for Uniformity in Construction Procurement and incorporates National Treasury requirements within them(SBD Forms).** Returnable schedules are separated into the following categories:
  - i) Forms, certificates and schedules for completion by the tenderer for use in the quantitative and qualitative **evaluation of the tender** C1.1 Form of Offer and Acceptance, C1.1.1: Offer, on page C3.
  - ii) A list of other returnable documents for completion by the tenderer and which will subsequently be **incorporated into the contract**
2. Failure to fully complete the relevant returnable documents shall render such a tender offer to be **declared non-responsive**. SBD forms with a water mark not applicable should be ignored
3. Tenderers shall note that their signatures appended to each returnable form represents a declaration that they **vouch for the accuracy and correctness of the information provided**, including the information provided by candidates proposed for the specified key positions.
4. Notwithstanding any check or audit conducted by or on behalf of the Employer, the information provided in the returnable documents is accepted in good faith and as justification for entering into a contract with a tenderer. If subsequently any information is found to be incorrect such discovery shall be taken as wilful misrepresentation by that tenderer to induce the contract.



**RETURNABLE  
SCHEDULES**

A	RECORD OF ADDENDATO TENDER DOCUMENTS.....	T13
B	COMPULSORY ENTERPRISE QUESTIONNAIRE.....	T14
C	STANDARD BIDDING DOCUMENTS .....	T15
	SBD 1: INVITATION TO BID.....	T15
	SBD 4: DECLARATION OF INTEREST .....	T17
	SBD 6.1: PREFERENCE POINTS CLAIM FORM IN TERMS OF THE PREFERENTIAL PROCUREMENT REGULATIONS 2017 .....	T21
	SBD 6.2: DECLARATION CERTIFICATE FOR LOCAL PRODUCTION AND CONTENT FOR DESIGNATED SECTORS .....	T25
	SBD 8: DECLARATION OF BIDDER'S PAST SUPPLY CHAIN MANAGEMENT PRACTICES.....	T32
	SBD 9: CERTIFICATE OF INDEPENDENT BID DETERMINATION .....	T34
D	B-BBEE STATUS LEVEL VERIFICATION CERTIFICATE.....	T36
E	CERTIFICATE OF AUTHORITY FOR SIGNATORY.....	T37
F	CONSTRUCTION EXPERIENCE .....	T38
G	KEY PERSONNEL.....	T39
H	CONSTRUCTION EQUIPMENT.....	T42
I	PROPOSED SUBCONTRACTORS.....	T43
J	PARTICIPATION IN JOB CREATION USING LOCAL LABOUR.....	T44
K	HEALTH AND SAFETY DECLARATION.....	T46
L	DEVIATIONS AND QUALIFICATIONS.....	T48
M	SCHEDULE OF ALTERNATIVE TENDERS.....	T49

NOTE: The Tenderer is required to complete each schedule and form listed above to the best of his ability as the evaluation of tenders and the eventual contract will be based on the information provided by the Tenderer. Failure of a Tenderer to complete the schedules and forms to the satisfaction of the Employer may lead to rejection on the grounds that the tender is non-responsive.



**transport**

Department:

Transport

PROVINCE OF KWAZULU-NATAL

# **PART C1: AGREEMENTS AND CONTRACT DATA**



## PART C1: AGREEMENTS & CONTRACT DATA

### C1.1.1 Form of Offer

- Ensure that **amount in words** corresponds with **amount in figures** on the Pricing Schedule
- Ensure that Form of Offer is signed by **authorised person** and **one witness**.

Refer to pg.  
C3 – C6

### C1.1.2 Form of Acceptance

- Ensure that Form of Acceptance is signed by **authorised person** and **one witness**.
- Ensure that Schedules of Deviations is fully completed, signed by **authorised person** and **one witness**



### C.1.3.1 CONTRACT DATA: INFORMATION PROVIDED BY THE EMPLOYER

Clause	Contract Data
SCC1.1.1.14	The time for achieving Practical Completion is <b>5 months</b> from the date of commencement of the Works, including non-working days and special non-working days.
1.2.1.2	<b>Address of Employer:</b>  Physical: NO. 1 CEDARA ROAD Merrivale, Howick 32913200  Postal: Private Bag X 03 Pietermaritzburg
SCC 4.1.1	The contract participation goal for local labour content is <b>6%</b> .
SCC 5.3.1 and 5.3.2	The date of commencement of the Works shall be <b>within 28 days</b> , after the Commencement Date.
5.13.1	The penalty for failing to complete the Works is <b>0,05%</b> of the Contract Sum per day.



### C.1.3.2 CONTRACT DATA: INFORMATION PROVIDED BY THE CONSULTANT

Clause	Contract Data
5.14.1	The requirements for achieving Practical Completion are as stated in General Conditions of Contract 2015.
SCC 6.2.1	The security to be provided by the Contractor shall be: <b>Fixed Performance Guarantee of 8% of the first One Million Rand plus 3,5% of the balance of the Contract Sum.</b>
6.10.3	The percentage retention on the amounts due to the Contractor is 10%.
8.6.1.3	The limit of indemnity for liability insurance is <b>R2 000 000,00</b> (Two million Rand only) for any single liability claim for projects with a duration shorter than 6 month and a project value less than R 5 000 000.00 (Five million Rand only).



**C.1.3.2 CONTRACT DATA: INFORMATION PROVIDED BY THE CONSULTANT**

<b>Clause</b>	<b>Contract Data</b>
<b>10.</b>	<b>CLAIMS AND DISPUTES</b>
10.5.2	Disputes shall be referred to ad-hoc adjudication.
10.5.3	The number of Adjudication Board members to be appointed shall be one.
10.8.1	Unresolved disputes shall be determined by court proceedings.





**transport**

Department:

Transport

PROVINCE OF KWAZULU-NATAL

# PART C2: PRICING DATA



**transport**

Department:  
Transport  
PROVINCE OF KWAZULU-NATAL

## C2.2 : BILL OF QUANTITIES

Refer to pg.  
C28– C40

**refer to Schedule A:  
Roadworks**



**transport**

Department:

Transport

PROVINCE OF KWAZULU-NATAL

# PART C3: SCOPE OF WORKS



## C3 SCOPE OF WORKS

Refer to pg. C41

- This section covers matters that relate to the project as a whole. Matters covered by the General and/or Particular Conditions of Contract are not repeated in this section, except to provide more detailed information



transport

Department:  
Transport  
PROVINCE OF KWAZULU-NATAL

## C3.1 STANDARD SPECIFICATIONS

Refer to pg. C42

The Standard Specifications on which this contract is based are the '**Standard Specifications for Road and Bridge Works for South African Road Authorities (COTO), Draft Standard (DS), October 2020**'.



## C3.2 PROJECT SPECIFICATIONS

### PART A: GENERAL

#### 1.1 Employer's objectives

#### 1. DESCRIPTION OF THE WORKS

The objective of the project is to re-gravel D1224 from km 0+000 to km 5+362, L1037 from km 0+00 to 1+068 and L737 from km 0+00 to km 1+501. There is no gravel left on the current surface and slippery when it rains the road requires a new gravel surface layer to be placed. The project will include the maintenance of the current stormwater infrastructure, and additional pipe culverts will be inserted where required.

Refer to  
pg. C43



## C3.2 PROJECT SPECIFICATIONS

### PART A: GENERAL

#### 1.2 Location of the Works

**District Road D1224 and Local roads L1037 and L737 is located in KZ 224 within DC 22, where the start of the project is at intersection of P127 and D363 in iMpendle area under Impendle Local Municipality.**

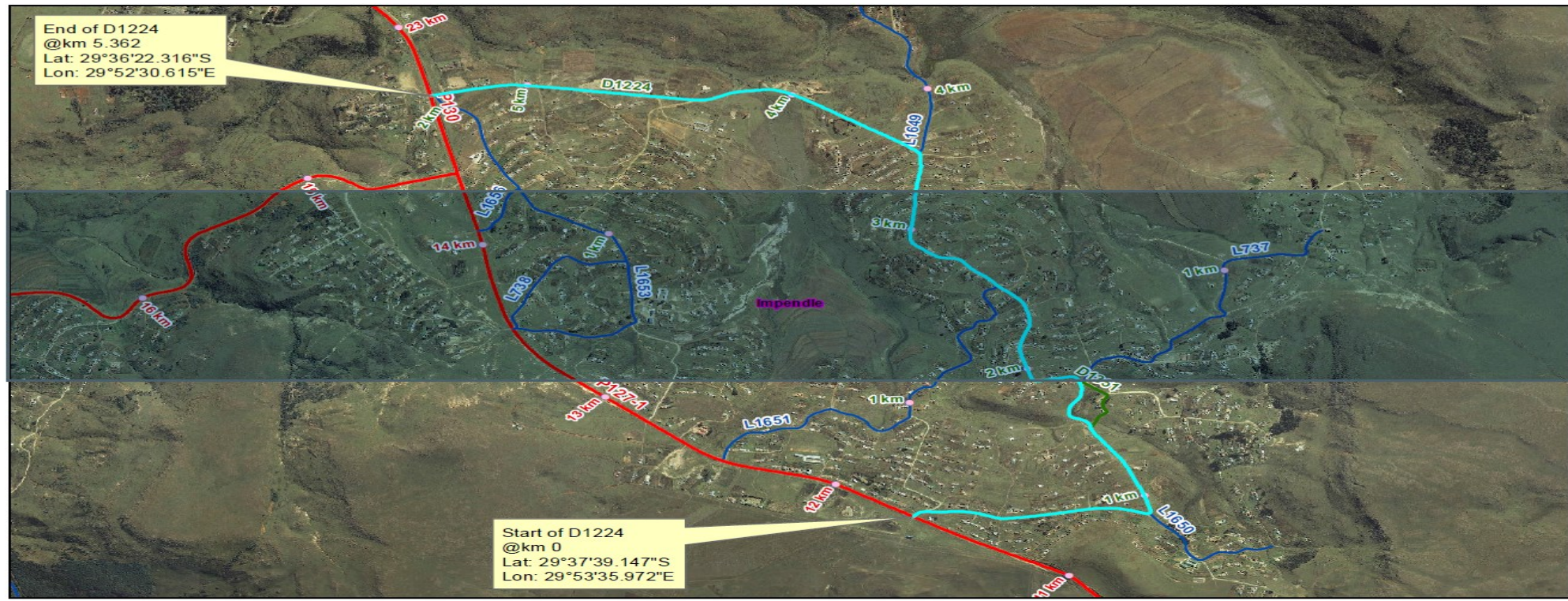
Refer to  
pg. C43



## C3.2 PROJECT SPECIFICATIONS

### PART A: GENERAL

## 1.2 Location of the Works .....



<b>Locality Map of D1224</b>		<b>Legend</b> 	 <b>transport</b> Department: Transport PROVINCE OF KWAZULU-NATAL Road Information Services Tel: (033) 315 8917 Email: Margie.Vosloo@kztransport.go.za FILEPATH:	DATE: 03 June 2021
Disclaimer: <small>The Department of Transport (DOT) is in no way responsible for the accuracy and completeness of data here presented. Therefore, it is advised that DOT be liable for damages, including loss of profits, or consequential damages arising out of the use of this information.</small>	<b>1:20 000</b>			COORDINATE SYSTEM: <small>WGS 1984 on the datum of the Province of KwaZulu-Natal          Transverse Mercator          Projection</small>





## C3.2 PROJECT SPECIFICATIONS

### PART A: GENERAL

#### 1.3 Overview of the Works

The Work to be carried out includes the following:

The Work to be carried out includes the following:

- Establishment and De-establishment
- Provision of traffic accommodation facilities,
- Roadbed preparation,
- Dumping of gravel material,
- Pavement layers of 150 mm gravel compacted 95 % mod AASH
- Continuous quality control over materials and workmanship, and compliance with the Particular Specifications with regard to environmental management and occupational health and safety, during all the above construction activities,
- Clearing of road reserve
- Finishing and tidying of the road and road reserve

Refer to  
pg. C43



## C3.2 PROJECT SPECIFICATIONS

### PART A: GENERAL

#### 1.4 Extent of the Works

A brief detail of the works for which this specification is applicable is as follows:  
Roadworks

(a) The design pavement structure is summarized in the following tables:-

<b>Layer</b>	<b>Thickness (mm)</b>	<b>TRH 14 Code</b>	<b>Description</b>	<b>Compaction (%)</b>
Gravel Wearing Course	150	-	Gravel selected from road prism or local borrow pits	95% Mod AASHTO

Refer to  
pg. C44



**C3.2 PROJECT SPECIFICATIONS.....**

**PART A: GENERAL**

**1.4 Extent of the Works**

(b) Material sources and quantities

<b>Description</b>	<b>Source</b>	<b>Approximate quantity</b>
Gravel Wearing Course 1 x 150mm	Gravel selected from road prism or local borrow pits	5626.80 m <sup>3</sup>

Refer to  
pg. C44



## C3.2 PROJECT SPECIFICATIONS

### PART A: GENERAL

#### 1.5.1 Access to the Site

Access to the site can be obtained from D1224,L737&L1037 in the Impendle Local Municipality (KZ224).

Throughout the duration of the contract, Roads shall be shared with other contractors engaged by the KwaZulu-Natal Department of Transport on the identified projects whose construction activities may affect access from time to time. The Contractor shall therefore be required to liaise on an ongoing basis with these other contractors with respect to access related matters throughout the duration of the contract.

Refer to  
pg. C44



## C3.2 PROJECT SPECIFICATIONS

### PART A: GENERAL

#### 1.5.6 Material sources, spoil and stockpile areas

The Borrow pit for D1224,L737&L1037 is located at approximately at km marker 20+520 on P130 on the right-hand side. The borrow pit is 5,57 km away from D1224,2,45 km away from L1037 and 7.25 away from L737 that amount the total kilom15.32 kilometers.

**P130**

**29.3528.135°S**

**29.525.534°E**

Refer to  
pg. C45



## C3.2 PROJECT SPECIFICATIONS

### PART A: GENERAL

#### 1.7 Testing of materials

The Contractor shall arrange for all tests required for process control to be done by a laboratory acceptable to and approved by the Engineer.

Laboratory must operate under the auspices of a SANAS accreditation and with the necessary quality assurance plans.

Refer to  
pg. C46



## C3.2 PROJECT SPECIFICATIONS

### PART A: GENERAL

#### 1.10 Contractor's campsite (Project Specific) f materials

The Contractor shall make his own arrangements for the provision of his campsite and housing for construction personnel but the chosen site shall be subject to the approval of the Employer's Agent and the local authorities.

Refer to  
pg. C47

The standard of the Contractor's camp, offices, accommodation, ablution, and other facilities must comply with the requirements of all local authority, environmental and industrial regulations concerned. In establishing and maintaining his campsite, due cognisance is to be taken of the requirements of clause A1.3.3 of the Standard Specifications for Road and Bridge Works for South African Road Authorities (COTO), Draft Standard (DS), October 2020.



## C3.2 PROJECT SPECIFICATIONS

### PART A: GENERAL

#### 1.12 Construction programme

The Contractor shall submit a detailed time programme in accordance with clause 5.6.2 of the General Conditions of Contract 2015, clause A1.2.7 of the Standard Specifications for Road and Bridge Works for South African Road Authorities (COTO), Draft Standard (DS), October 2020.

Refer to  
pg. C47





## C3.2 PROJECT SPECIFICATIONS

### PART A: GENERAL

#### 5.7 Daily records

A site diary is to be compiled jointly by the Construction Manager and the Employer's Agent's Representatives on site and is to be agreed and signed by both parties. The original signed copy is to be retained by the Employer's Agent's Representative.

The Contractor is to keep daily records of people and equipment on site in a format to be agreed by the Employer's Agent's Representative, and is to provide copies to the Employer's Agent's Representative when requested.

Refer to  
pg. C53



## C3.2 PROJECT SPECIFICATIONS

### PART A: GENERAL

#### 5.8 Payment certificates

Details of measurements, proof of payment for items contained in provisional sums and prime cost sums, proof of ownership of Plant and materials on site and documentation pertaining to contract price adjustment and special materials, are required as substantiation of claims for payment.

Refer to  
pg. C53



## C3.2 PROJECT SPECIFICATIONS.....

### PART A: GENERAL

#### **5.11 Submission of reports**

The contractor shall submit monthly reports in accordance with the specifications in Part E:  
Expanded Public Works Programme

Refer to  
pg. C53



## PART C4: SITE/BACKGROUND INFORMATION

**District Road D1224 and L737** is located in the kwaGomane area area under Impendle Local Municipality and the Local road **L1037** is located kwaNovuka area under Impendle Local Municipality within the uMgungundlovu District Municipality.

Position	Lat	Lon
@ D1224 Start km 0+000	29.3739.147°S	29.5335.972°E
End km 5+360	29.3622.316°S	29.5230.615°E

Position	Lat	Lon
@ L737 Start km 0+000	29.3715.202°S	29.5359465°E
End km 1+500	29.3648.061°S	29.5432.496°E

Position	Lat	Lon
@ L1037 Start km 0+000	29.3416.818°S	29.5142.197°E
End km 1+070	29.3351.934h°S	29.5159.291°E





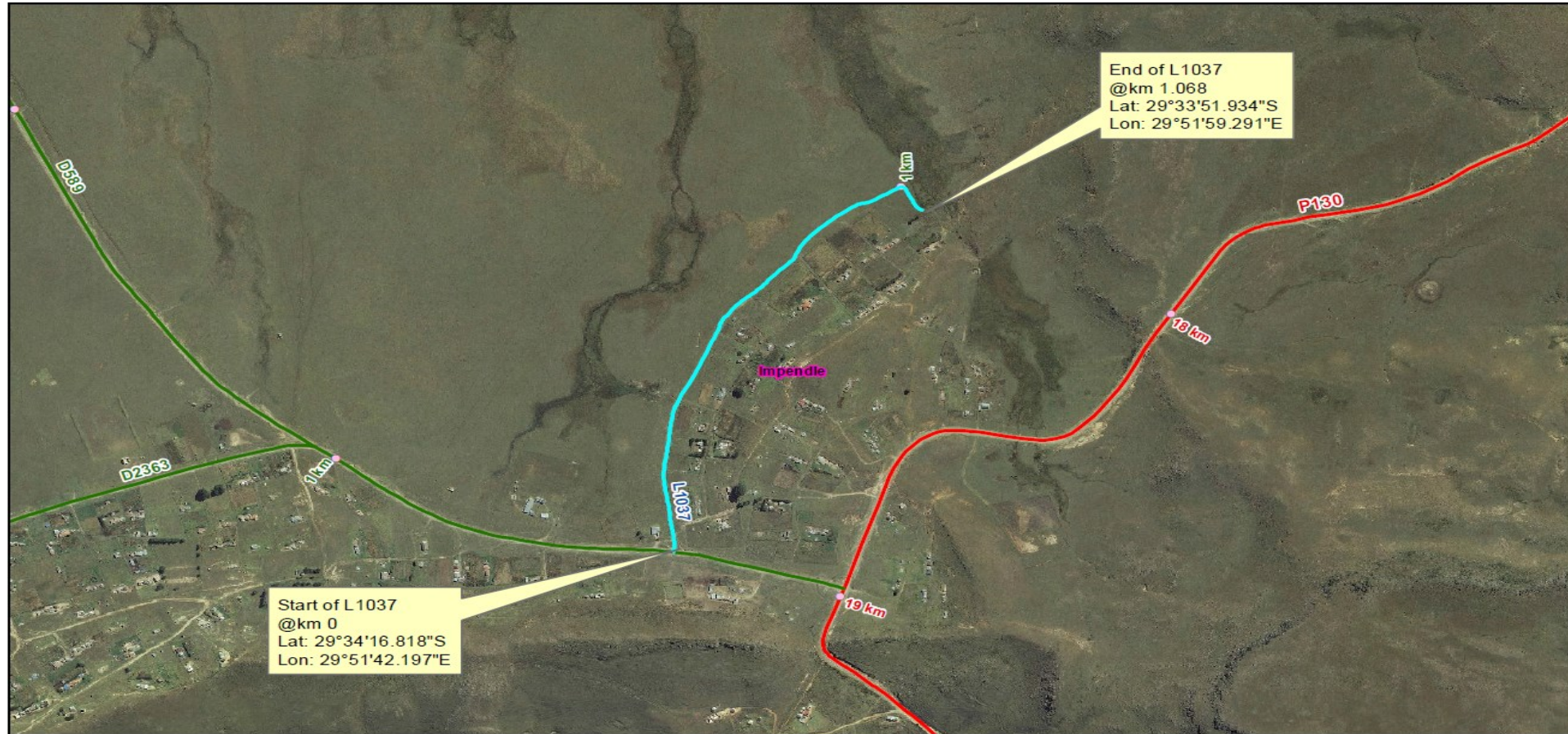
### Coordinates



<b>Locality Map of L737</b>		<b>Legend</b> 	 Department: Transport PROVINCE OF KWAZULU-NATAL Road Information Services Tel: (033) 355 8917 Email: Margie.Vosloo@kztransport.go.za <b>FILEPATH:</b>	<b>DATE:</b> 03 June 2021
Disclaimer: <small>The Department of Transport (DOT) is in no way responsible for the accuracy and completeness of data here presented. Therefore in no event will DOT be liable for damages including loss of profits or consequential damages arising out of the use of this information.</small>	1:10 000			<b>COORDINATE SYSTEM:</b> <small>WGS1984 on the Database of Geographical Names</small>



### Coordinates



<b>Locality Map of L1037</b>		<b>Legend</b> 	 Department: <b>PROVINCE OF KWAZULU-NATAL</b> Road Information Services Tel: (033) 355 8917 Email: <a href="mailto:Margie.Vosloo@kzntransport.go.za">Margie.Vosloo@kzntransport.go.za</a> FILEPATH:	DATE: 03 June 2021
Disclaimer: <small>The Department of Transport (DOT) is in no way responsible for the accuracy and completeness of data here presented. Therefore in no event will DOT be liable for damages including loss of profits or consequential damages arising out of the use of this information.</small>	<b>1:10 000</b>			COORDINATE SYSTEM: <small>WGS1983 on the spheroid of 64 Transverse_Mercator Projection</small>

# Pictures





# L737





# L1037





# D1224





**transport**

Department:  
Transport  
PROVINCE OF KWAZULU-NATAL

**END/ THANK  
YOU**

**GROWING  
KWAZULU-NATAL  
TOGETHER**